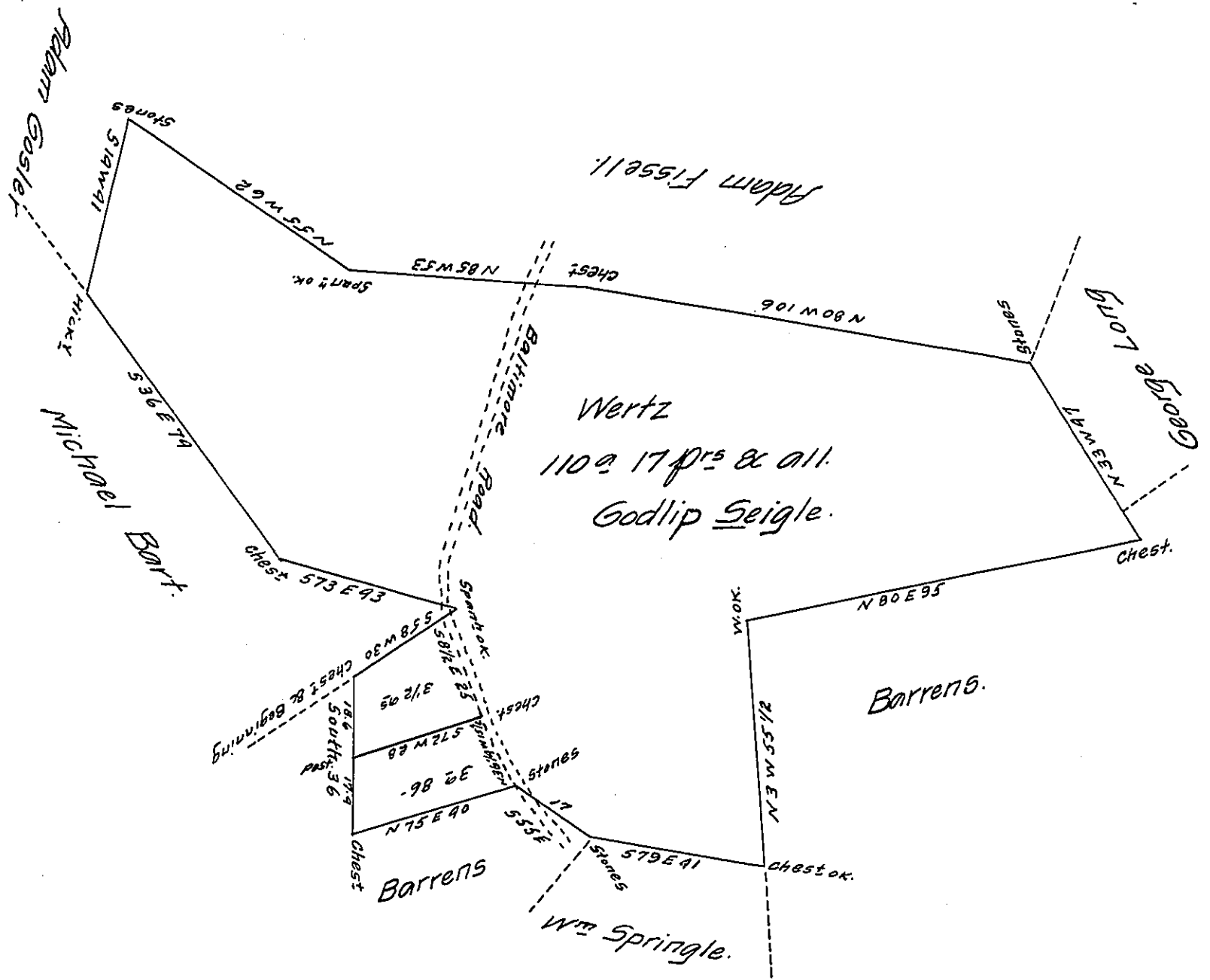


FORM NO 1.



Situate about 4 Miles from York Town York County Surveyed
the 13th of the 4th month 1772 In pursuance of an order from Rich-
ard Hockley dated the 14th of November 1770 directing to Survey
150^a and give an account of the quality thereof, the soil is thin
and poor mostly small chestnut wood that grows on the most
of it tho there is some red oak and chestnut oak saplings on
some part of it but little Meadow can be made on it.

Wm Matthews [Signature]

To John Lukens Esqr.
Survey General

this Land lies without the Manor ~~the~~ lines.

IN TESTIMONY that the above is a copy of the original remaining on file in
the Department of Internal Affairs of Pennsylvania, made
conformably to an Act of Assembly approved the 16th day of
February, 1833, I have hereunto set my Hand and caused
the Seal of said Department to be affixed at Harrisburg,
this sixth day of September 1907.

Henry Howell
Secretary of Internal Affairs.